

DASH & ALBERT

an annie selke company

DISTRIBUTED IN AUSTRALIA BY WINTON HOUSE

Dash & Albert The Bunny Williams Collection



BUNNY WILLIAMS – JUTE RUGS



MARCO JUNIPER



MARCO MOSS



MARCO OAK



MARCO NAVY

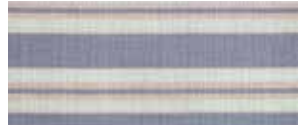


TWIGGY

BUNNY WILLIAMS – INDOOR OUTDOOR RUGS



ANNABELLE WHEAT



CLARENCE



CLEO BLUE



CLEO CEMENT



CLEO NAVY



ELIZABETH BLUE



ELIZABETH GREEN



ELIZABETH NAVY



ELIZABETH SAND



FALLS VILLAGE CEMENT



FALLS VILLAGE STRIPE NAVY



JACK



MCGREGOR NAVY



SAMSON GREY



SAMSON NAVY



SAMSON OAK



STREETER

BUNNY WILLIAMS – COTTON RUGS



BEATRICE BLUE



BEATRICE LIGHT GREEN



BEATRICE LIGHT GREY



BO BLUE



BONNIE BLUE



BONNIE GREY

BUNNY WILLIAMS – WOOL RUGS



BELLA NAVY



BELLA OAK



TWIGGY

THE BUNNY WILLIAMS COLLECTION



The Collection

The Bunny Williams Collection is a creative collaboration between interior design icon and best-selling author Bunny Williams and Annie Selke from the Dash & Albert Rug Company. The Collection includes a range of amazing handmade Cotton, Jute, Indoor Outdoor and Woollen rugs and chic pillows and throws inspired by Williams's extensive travels.

Material

The Indoor Outdoor Rugs in the collection are made from 100% recycled polyester (PET). The manufacturing technique provides a highly durable, stylish, textile look and feel that makes these Indoor Outdoor rugs truly unique to the market. The Cotton rugs are made from 100% pure cotton, the Jute rugs 100% jute and are vegetable dyed and eco-friendly while the Woollen rugs are a wool blend.

Care

Regular vacuuming and the occasional gentle shake should keep your rug in ship shape condition. All Indoor Outdoor rugs can be cleaned with cold soapy water and an ordinary garden hose to remove any marks, stains or mildew. Allow to air dry. The Cotton, Jute and Woollen rugs should be professionally cleaned, on an as required basis to remove marks and stains. Do not bleach, machine wash or tumble dry the cotton, jute and woollen rugs.



DASH & ALBERT ANNOUNCES COLLABORATION WITH INTERIOR DESIGN ICON BUNNY WILLIAMS



In early 2014, the Annie Selke Companies announced a creative collaboration with interior design icon and best-selling author Bunny Williams. The Bunny Williams for Dash & Albert Rug Company collection, it is a compelling combination of fifty six (56) elegant, performance-based, outdoor-friendly designs, as well as unusual natural jute weaves appropriate for use indoors or on covered porches. Bunny Williams for Dash & Albert also includes a worldly collection of chic pillows and throws inspired by Williams's extensive travels.

Annie Selke, founder and CEO of Dash & Alber, says, "I have always been a huge fan of Bunny and her work. Classic, charismatic, and beautifully balanced, Bunny's approach to decorating marries comfort and practicality with style and functionality. She is a genius colourist and has a sensational eye for proportion and a wonderful attention to detail rarely found nowadays."

Bunny Williams was equally excited about the opportunity to branch out with Dash & Albert. "My job as a designer is to help make smart choices when a house is being furnished," she explains. "Clients want homes they can really live in and interiors that fit their lifestyles. Today there are so many great, affordable ways to decorate and make rooms both attractive and practical, like Dash & Albert's stain-proof rugs. The quality level of Dash & Albert is extraordinary. When Annie asked me to collaborate with her, I jumped at the chance."

Bunny Williams opened her own interior design company, Bunny Williams Incorporated, in 1988 after 22 years with the venerable decorating firm Parish-Hadley Associates. Schooled in the classics, restraint and appropriateness are hallmarks of her style. Williams co-owns Treillage Ltd., a garden-furniture and ornament shop in New York, with antiques dealer John Rosselli, and she also designs furniture and decorative accessories for her own line, Bunny Williams Home, as well as several licensing partners.

Bunny Williams has authored a number of highly regarded books during her illustrious career that include *On Garden Style*, *An Affair with a House*, *Bunny Williams' Point of View* and *A Scrapbook for Living*.

FREQUENTLY ASKED QUESTIONS (FAQ'S)

GENERAL INFORMATION

Q1. Can you describe the Bunny Williams Rug Collection?

A: The Bunny Williams Collection is a creative collaboration between interior design icon and bestselling author Bunny Williams and Annie Selke from the Dash & Albert Rug Company. The Collection is a compelling combination of 33 elegant, performance based designs that includes a range of cotton, natural jute and woollen weaves appropriate for use indoors along with a range of amazing Indoor Outdoor rugs. The Collection also includes a worldly range of chic pillows and throws inspired by Williams's extensive travels. As well as being stylish and highly versatile these rugs and accessories are extremely durable and are the perfect choice for your indoor or outdoor living areas.

Q2. What is an Indoor Outdoor rug?

A: The Bunny Williams Indoor Outdoor rugs are just that, they are rugs that have been designed for use in both indoor and outdoor living spaces. As well as being stylish and highly versatile they are extremely durable and are the perfect choice for high traffic areas. They are Ultra Violet (UV) treated to resist fading, mould and mildew resistant, scrubbable and not at all high maintenance. These rugs are a perfect complement in any indoor or outdoor living space.

Q3. Where are Bunny Williams Rugs manufactured?

A: Dash & Albert manufactures their products, including the Bunny Williams Collection in India. Dash & Albert only use Fair Trade, Fair Labour workshops, so be rest assured you're purchasing a morally and ethically made product.

Q4. What materials are the Bunny Williams rugs made from?

A: The Bunny Williams Indoor Outdoor Rugs are made from 100% recycled polyester (PET). These rugs aren't like other Indoor Outdoor rugs on the market because of the process used in their manufacture. The recycled fibres are produced by various spinning and twisting techniques which is then extruded into a fine yarn that is woven to form the various styles and patterns in the Indoor Outdoor rug range. As an analogy, just think of the thread count in sheets where the finer the thread and the higher the thread count, the softer and more luxurious the feel. This manufacturing technique is what provides the stylish, high quality and textile look and feel in each and every Bunny Williams Indoor Outdoor rug and what makes these rugs unique to the market.

The Bunny Williams jute rugs are made from either 100% jute or 88% jute 9% cotton and 3% polyester and are vegetable dyed and eco-friendly. The Bunny Williams cotton rugs are made from 100% pure cotton while the Bunny Williams woollen rugs are a wool blend. The cotton, jute and woollen weaves are unusual and distinctive making them stand out from the average rug available on the market.

Q5. What styles of rugs are in the Bunny Williams Collection?

A: There are currently over 18 different Bunny Williams Indoor Outdoor rugs, 6 jute rugs, 6 cotton rugs and 3 wool blends to choose from, whether it's a Classic Stripe, Plaid or a Geometric pattern we're sure there will be something that you'll fancy in this Collection. The following styles are available in the Bunny Williams Collection:

- Length Stripe
 - o Indoor Outdoor: Clarence and Max
- Width Stripe
 - o Indoor Outdoor: Falls Village Stripe
 - o Woollen: Twiggy
- Geometric Pattern:
 - o Indoor Outdoor: Elizabeth, Cleo, Annabelle, Samson, McGregor, Streeter, etc.
 - o Jute: Marco
 - o Cotton: Bonnie, Beatrice and Bo
- Plaid:
 - o Indoor Outdoor: Jack

Q6. Can the Bunny Williams rugs vary slightly from their nominated size and /or in colour?

A: As the Bunny Williams rugs are all handmade they may occasionally vary slightly in the size (+/- 3%) and/or colour. Dash & Albert make every effort to ensure that there is minimal colour variation however, some may be expected from time to time (5% is the Australian Standard for carpet colour variation). Slight variations in size and colour is not considered a manufacturers defect on handmade rugs.

LOOK, FEEL & TOUCH

Q7. How do the Bunny Williams Indoor Outdoor rugs feel to the touch?

A: Honestly they feel amazing, unlike other Indoor Outdoor rugs on the market the Bunny Williams rugs are as tough as nails but soft to touch, with a texture that actually mimics woven wool. Often we describe it as the difference between wearing a woollen and an acrylic jumper. People are always astounded once they feel the rugs and so many don't actually believe that they are in fact an Indoor Outdoor rug! By choosing an Indoor Outdoor rug from the Collection you combine quality, style and durability to complement the look and feel of your particular living space.

Q8. How do the Bunny Williams rugs compare with other similar rugs available in the market?

A: You can't compare The Bunny Williams Indoor Outdoor rugs to similar products on the market, there just isn't anything like them – other rugs look and feel like plastic or shiny woven spaghetti but not these rugs. They are high quality, durable and reversible rugs are soft to touch because of their unique construction technique. We encourage you to compare and contrast the Bunny Williams Indoor Outdoor rugs with other products and you will readily appreciate the difference.



Streeter, indoor outdoor PET rug

FREQUENTLY ASKED QUESTIONS (FAQ'S)

The jute weaves are unlike any others we've seen. They are unusual, unique and very distinctive and could in no way be compared with other jute rugs available in the market. The cotton and woollen weaves are interesting, distinctive with detailed overlay weaves creating unique patterns and textures.

Q9. Can young children play safely on a Bunny Williams Indoor Outdoor rug?

A: We often have Grandparents and Mum's asking if the Bunny Williams Indoor Outdoor rugs are safe for young children to play on without being scratched. We are happy to say that, yes they are, due to their unique construction technique. So those little crawling knees, elbows and faces should be safe when playing on these rugs.

Q10. Where can I use a Bunny Williams Indoor Outdoor rug?

A: Any rug in this wonderful collection can be used inside your house – under dining room tables, kids bedrooms and playrooms, kitchens, laundries, bathrooms, the list goes on and on..... The Indoor Outdoor rugs in the collection have the added bonus of being equally suitable for use on outdoor patios, pool side cabanas and decks, barbeque and outdoor dining areas. There's really no place you can't position one, so put your imagination to work and we guarantee you will not be disappointed with the result.

CUSTOM SIZED RUGS

Q11. Can I order a custom sized Bunny Williams rug?

A: Given that Dash & Albert have such an extensive range of styles, patterns and sizes of rugs in the Bunny Williams Collection available to choose from, at this point in time, they do not make custom sized rugs in this collection.

VACUUM CLEANER ADVICE

Q12. What type of vacuum cleaner should I use to care and maintain my Bunny Williams rug?

A: To maintain the look, feel and longevity of your Bunny Williams rug you should vacuum the rug using a good quality, low powered vacuum cleaner fitted with a soft vacuum brush. The use of a vacuum cleaner fitted with either a rotating brush or bristle brush head can cause abrasion to the surface of the rug which in turn may cause it the rug to fluff and pill. In extreme circumstances long term use of this type of vacuum cleaner may impact the structural integrity of the rug. Using a vacuum cleaner fitted with a soft vacuum brush or use of the upholstery attachment to vacuum will help prolong the life of your rug.

CARE & MAINTENANCE

Q13. What routine care and maintenance is required for a Bunny Williams rug?

A: Routine cleaning and maintenance of a Bunny Williams Cotton, Indoor Outdoor, Jute or Woollen rug is very easy and time effective. All you need do is lightly vacuum, sweep with a broom or pick up the rug and shake it out to remove the general daily build-up of dust and dirt and this should keep your rug looking as good as new!

Q14. How should I vacuum my Bunny Williams Indoor Outdoor pet rug to achieve the best outcome?

A: In order to achieve the best results from vacuuming your Dash & Albert Indoor Outdoor PET rug we recommend that you:

- Ensure that your vacuum cleaner has been fitted with a new bag.
- Alternatively, if you are using a bag-less vacuum cleaner, empty out the device prior to vacuuming
- Remove all furniture and other obstacles from your rug
- Roll up your rug and vacuum the floor underneath
- Unroll and place your rug right side up
- Vacuum your rug with a vacuum cleaner fitted with a soft brush head
- Replace and position all furniture on your rug

Do not use a vacuum cleaner fitted with either a rotating brush or bristle brush head when maintaining your Indoor Outdoor PET rug as this can cause irreparable damage to the structural integrity of the rug.

Q15. How do I dry a Bunny Williams Indoor Outdoor rug?

A: From time to time you may need to wet your Indoor Outdoor rug with cold soapy water and rinse with cold water to remove stains and marks. The recommended approach to drying an Indoor Outdoor rug is to simply hang the rug over a clothes line, balcony or pool fence and allow it to air dry. This approach will preserve the quality and look and feel of the rug. Do not machine wash or tumble dry the rug.

Q16. What should I do if I notice stray threads "popping" out of my new Bunny Williams rug?

A: From time to time you may notice either a single or a small number of stray threads popping up from your new Cotton, Indoor Outdoor, Jute or Woollen rug. This is normal and is not considered a manufacturers defect on handmade rugs. To rectify this situation, do not cut or pull the threads, simply tuck any loose threads back into the rug. You should continue to check for additional stray threads over the next few months and this process should slow down and eventually cease as the rug settles into position.



Bella Oak, wool woven rug

FREQUENTLY ASKED QUESTIONS (FAQ'S)

Q17. What should I do if I notice my new Bunny Williams rug is shedding?

A: From time to time you may notice some shedding occurring on your new rug. This is a normal process which may occur on our handmade rugs and is not considered a manufacturers defect. The removal of any loose fibres will be hastened by regular vacuuming using a good quality, low powered vacuum cleaner fitted with a soft vacuum brush. You should continue to check for additional shedding over the next few months and this process should slow down and eventually cease as the rug settles into position.

Q18. What should I do if my Bunny Williams Indoor Outdoor PET rug becomes saturated during a rainfall event?

A: Bunny Williams Indoor Outdoor PET rugs can hold in moisture if not dried after complete saturation. If your PET rug is outdoors and becomes fully saturated after rain, then hang the rug over a clothes line, balcony or pool fence and allow it to air dry. This approach will preserve the quality and look and feel of the rug. Do not machine wash or tumble dry the rug.

Q19. Can heavy furniture cause indentations in my Bunny Williams rug?

A: Heavy furniture may cause flattening of your Cotton, Indoor Outdoor, Jute or Woollen rug. Dash & Albert recommend that you use furniture caps and to rotate your rug regularly to minimise indentations.

CLEANING

Q20. How do I remove stains and marks from a Bunny Williams Cotton, Jute or Woollen rug?

A: Unlike the Indoor Outdoor rugs in this Collection, Dash & Albert recommend that all Cotton, Jute and Woollen rugs should be professionally cleaned to remove stains and marks. Do not bleach, machine wash or tumble dry these rugs.

Q21. How do I remove food spills from my Bunny Williams Jute rug?

A: Remove any surplus food taking care not to push any of the food into the surface of the rug. Any remaining food should be allowed to dry before attempting to remove it from your rug. Dry spots can then be removed by scraping carefully from the outer edges toward the middle of the spot. Remove the collected food by gently vacuuming. Professional cleaning is recommended when needed. Do not bleach, machine wash or tumble dry these rugs.

Q22. How do I remove liquid spills from my Bunny Williams Jute rug?

A: Do not rub any wet spots. Simply remove the excess liquid by blotting with paper towels and clean with a soft cloth. Allow any wet spots to air dry. Professional cleaning is recommended when needed. Do not bleach, machine wash or tumble dry these rugs.

Q23. How can I clean a Bunny Williams Indoor Outdoor PET rug if it has mould and mildew on it?

A: The best way to clean mould and mildew off an Indoor Outdoor PET rug is to wet the affected area with cold soapy water and scrub gently with a soft brush until the mould and mildew come away from the rug. Bleach if required. Hose off the affected area with your garden hose. Hang the rug over the clothes line, balcony or pool fence and allow it to air dry. Do not machine wash or tumble dry the rug.

Q24. How can I clean a Bunny Williams Indoor Outdoor PET rug if it has red wine spilt on it?

A: We all have that friend who talks with their hands, you know who it is..... well that red wine spill comes out! Wet the affected area with cold soapy water, lightly scrub the spill area with a soft brush until the red wine stain comes away from the rug. Hose off the affected area with your garden hose. Hang the rug over the clothes line, balcony or pool fence and allow it to air dry. Red wine stains can be tough so if the stain persists we have found that a little Vanish Preen with Oxi Action on the offending stain works wonders. Wet the affected area with cold soapy water and apply the Vanish Preen to the affected area, allow the Vanish Preen to soak into the stain, scrub gently with a soft brush until the stain comes away from the rug. Rinse off with your garden hose and it will look as good as new. Hang the rug over the clothes line, balcony or pool fence and allow it to air dry. Do not machine wash or tumble dry the rug.

Q25. How do I remove stubborn stains and marks from a Bunny Williams Indoor Outdoor PET rug?

A: We all have partners and children who just seem to find new ways of marking and staining furniture and floor coverings! For those really stubborn marks and stains we have found that the application of a little Vanish Preen with Oxi Action on the offending stain works wonders, wet the affected area with soapy water, apply the Vanish Preen to the mark or stain, allow the Vanish Preen to soak into the stain, scrub gently with a soft brush until the stain comes away from the rug and then hose off with your garden hose and it will look as good as new. Hang the rug over the clothes line, balcony or pool fence and allow it to air dry. Do not machine wash or tumble dry the rug.

Q26. Can marks from indelible pens be removed from a Bunny Williams Indoor Outdoor PET rug?

A: You bet you can! Wet the affected area with soapy water, spray White King Bleach on the indelible pen marks, and allow the bleach to soak into the stain, scrub gently with a soft brush until the stain comes away from the rug. Repeat if needed. Hose off with your garden hose and it will look as good as new. Hang the rug over the clothes line, balcony or pool fence and allow it to air dry. Do not machine wash or tumble dry.



Beatrice Blue, cotton woven rug

FREQUENTLY ASKED QUESTIONS (FAQ'S)

TIPS FOR RUG PLACEMENT

Q27. How have the various sizes of Bunny Williams Indoor Outdoor PET rugs been used by your Clients?

A: With a rug pattern and size available for all locations, you can let your creative side loose when selecting from this wonderful product range to compliment and complete the design of your indoor and outdoor living areas. We have many clients that have used these rugs in wide variety of ways, so as a general guide we offer the following suggestions:

- Doormats: think entrances, kitchen sinks, laundry sinks and small bathrooms
- Runners: perfect for hallways, stairs, galley kitchens, along with balconies and veranda's in terraces and small cottages
- Small Area Rugs: ideal for a child's bedroom, children's play areas, medium sized balconies and verandas and your cosy outdoor BBQ and dining areas
- Large Area Rugs: fabulous for large living areas both formal and informal, dining rooms, games and billiards rooms, large balconies and verandas, pool cabanas, wooden poolside decks and BBQ and outdoor dining areas

Q28. How have the various sizes of Bunny Williams Cotton, Jute and Woollen rugs been used by your Clients?

A: These rugs are a sophisticated and stylish addition to any home, while you can't use them in outdoor living areas, there are a wide variety of ways they can be used in your indoor living areas. As a general guide we offer the following suggestions:

- Doormats: think entrances
- Runners: perfect for hallways and galley kitchens
- Small Area Rugs: ideal for a child's bedroom, children's play areas small living areas
- Large Area Rugs: fabulous for large living areas both formal and informal, dining rooms and games and billiards rooms

Q29. Can I install a Bunny Williams Indoor Outdoor PET rug on my staircase?

A: There are a large number of Bunny Williams Indoor Outdoor PET rugs suitable for installation on your staircase. If you are considering this type of project then please contact Winton House to discuss your installation ideas, identify which Indoor Outdoor PET rugs are suitable for stair installation and to obtain copies of our "Selecting a Runner for your Staircase" and "Stair Runner Installation Guidelines" brochures. We can also provide you with images from a range of clients who have successfully completed these types of projects. These images should provide inspiration allowing you to create your own individual look on this major feature in your home.

Q30. Do I need to place a rug pad under a Bunny Williams rug?

A: Dash & Albert recommend rug pads be placed under all of their rug products. If the rug is situated indoors (i.e. cotton, jute and indoor outdoor rugs) then we would suggest you purchase a Dash & Albert Rug Stop™ rug pad. On the other hand, if the rug is to be situated predominantly outdoors (i.e. indoor outdoor rugs) then we would suggest you purchase a Dash & Albert Outdoor Floor™ rug pad. Rug pads can be purchased through any accredited Dash & Albert stockist or interior designers who hold an account with Winton House.

Q31. Can I place a Bunny Williams Indoor Outdoor PET rug under or immediately adjacent to sources of high radiant heat?

A: All Bunny Williams Indoor Outdoor PET rugs are made from synthetic fibres. This type of rug should not be placed under or immediately adjacent to sources of high radiant heat such as fire pits, BBQ's, gas heaters, etc. Placement of an Indoor Outdoor PET rug in these locations will cause damage to the structural integrity of the rug and significantly reduce the longevity of your rug.

PET FRIENDLINESS

Q32. Can my pet share the Bunny Williams Indoor Outdoor PET rug experience?

A: Pets love our Indoor Outdoor PET rugs for napping and playing. However, if you see your pet scratching at your Indoor Outdoor rug protect the rug by redirecting the behaviour immediately with a scratching post and toys. Damage caused due to pets scratching at the rug are not considered product faults or defects.

Q33. What should I do if my pet urinates on my Bunny Williams Indoor Outdoor PET rug?

A: Immediately blot the stain removing as much of the liquid as possible and then follow the cleaning instructions provided in Q25 to remove the stains and smell from your rug. Do not machine wash or tumble dry the rug.

Q34. What other products are available in the Bunny Williams Indoor Outdoor PET range for my pet?

A: We are delighted to advise that Dash & Albert have introduced the Wouf which a high quality, stylish, durable and fully washable pet bed. The Wouf comes in three sizes, small (45L x 60W x 15H cm), medium (60L x 80W x 15H cm) and large (75L x 100W x 15H cm). The Wouf can be cleaned on a routine basis using soapy water and then rinsing with water from your garden hose to ensure that your pet's Wouf remains in a clean, fresh and as new condition. Allow your Wouf to air dry. Do not machine wash or tumble dry. This wonderful accessory can be ordered directly through Winton House or any accredited Dash & Albert interior designer who holds an account with Winton House.

FREQUENTLY ASKED QUESTIONS (FAQ'S)

TIPS FOR RUG STORAGE

Q35. **What should I do if I want to store my Bunny Williams rug for a period of time?**

A: When storing your rug, do not fold or place the rug in an airtight plastic bag. It is advisable to roll the rug up along its shortest length with the backing facing outwards and then wrap it with a cloth for protection while it is in storage.

AVAILABILITY & ORDERING

Q36. **What patterns and sizes are the Bunny Williams rugs available in Australia?**

A: Winton House currently stocks four (4) different patterns in the Indoor Outdoor range and two (2) different patterns in the jute range. We provide two (2) large area rug sizes in each of these patterns; 152 x 243 cm and 243 x 304 cm.

Q37. **If the rug pattern and size I like isn't carried by Winton House can I still order this product?**

A: We are pleased to advise that you can place an order for any product available in the current Dash & Albert product catalogue through any accredited Dash & Albert stockist or interior designers who hold an account with Winton House. Products not stocked in Australia by Winton House are deemed as Special Orders. All Special Orders require a 50% non-refundable deposit be paid prior to order being placed with our US supplier with the balance to be paid prior to shipping to your nominated delivery address.



Marco Navy, jute woven rug

RUG PADS



Rug-Stop Rug Pad

This cushy rug pad will have you stopping in your tracks when you feel the difference it makes under your favourite rug. A low profile supports the rug evenly, promoting even wear and keeping it looking handsome year after year, while the woven construction promotes air circulation. Made of PVC-coated polyester with high-grade vinyl, this rug pad is ideal for use under low-profile rugs throughout the home and on staircases.

PVC-coated polyester. Guaranteed not to stain. Fire-retardant, moth-proof, and treated with an antimicrobial guard. Please follow floor manufacturer's instructions when using a rug pad. Cannot be used on radiant heat floors. Hand wash with mild detergent, rinse, and lay flat to dry.

For Use With:

- Cotton Woven
- Indoor Outdoor (PET) – indoor use
- Indoor Outdoor (Polypropylene) – indoor use
- Jute Woven
- Wool Woven

Outdoor Floor Rug Pad

Take it outside! This sturdy outdoor rug pad provides a no-slip grip while standing up to outdoor conditions. Made of PVC-coated polyester, this rug pad is more rigid and less plasticized than our indoor varieties, allowing it to be used outside without any surface transfer. Layer under your favourite indoor/outdoor rugs to ensure safety and comfort on your porch, deck, patio, in the sunroom, workshop, or even garage.

PVC-coated polyester. May not be suitable for use on vinyl, lacquered, acrylic, Mexican Saltillo tile, terra-cotta, or unsealed surfaces. Please follow floor manufacturer's instructions when using a rug pad. Cannot be used on radiant heat floors.

For Use With:

- Indoor Outdoor (PET) – outdoor use
- Indoor Outdoor (Polypropylene) – outdoor use

AVAILABLE RUG SIZES

INDOOR OUTDOOR PET (100%) RUGS - AVAILABLE PRODUCT SIZES

United States Size (' feet & "inches)	Australian Size (cm)	Australian Size (m)	Product Size Availability
2' x 3'	60 x 91	0.60 x 0.91	All Patterns
2.5' x 8'	76 x 243	0.76 x 2.43	All Patterns
3' x 5'	91 x 152	0.91 x 1.52	All Patterns
5' x 8'	152 x 243	1.52 x 2.43	All Patterns
8' x 10'	243 x 304	2.43 x 3.04	All Patterns
10' x 14'	304 x 425	3.04 x 4.25	All Patterns

COTTON WOVEN RUGS - AVAILABLE PRODUCT SIZES

United States Size (' feet & "inches)	Australian Size (cm)	Australian Size (m)	Product Size Availability
2' x 3'	60 x 91	0.60 x 0.91	All Patterns
2.5' x 8'	76 x 243	0.76 x 2.43	All Patterns
3' x 5'	91 x 152	0.91 x 1.52	All Patterns
5' x 8'	152 x 243	1.52 x 2.43	All Patterns
8' x 10'	243 x 304	2.43 x 3.04	All Patterns
10' x 14'	304 x 425	3.04 x 4.25	All Patterns

JUTE RUGS - AVAILABLE PRODUCT SIZES

United States Size (' feet & "inches)	Australian Size (cm)	Australian Size (m)	Product Size Availability
2' x 3'	60 x 91	0.60 x 0.91	All Patterns
2.5' x 8'	76 x 243	0.76 x 2.43	All Patterns
3' x 5'	91 x 152	0.91 x 1.52	All Patterns
5' x 8'	152 x 243	1.52 x 2.43	All Patterns
8' x 10'	243 x 304	2.43 x 3.04	All Patterns
10' x 14'	304 x 425	3.04 x 4.25	All Patterns

WOOL RUGS - AVAILABLE PRODUCT SIZES

United States Size (' feet & "inches)	Australian Size (cm)	Australian Size (m)	Product Size Availability
2' x 3'	60 x 91	0.60 x 0.91	All Patterns
2.5' x 8'	76 x 243	0.76 x 2.43	All Patterns
3' x 5'	91 x 152	0.91 x 1.52	All Patterns
5' x 8'	152 x 243	1.52 x 2.43	All Patterns
8' x 10'	243 x 304	2.43 x 3.04	All Patterns
10' x 14'	304 x 425	3.04 x 4.25	All Patterns



Samson Navy, indoor outdoor PET rug



Bringing the Best of America Home